

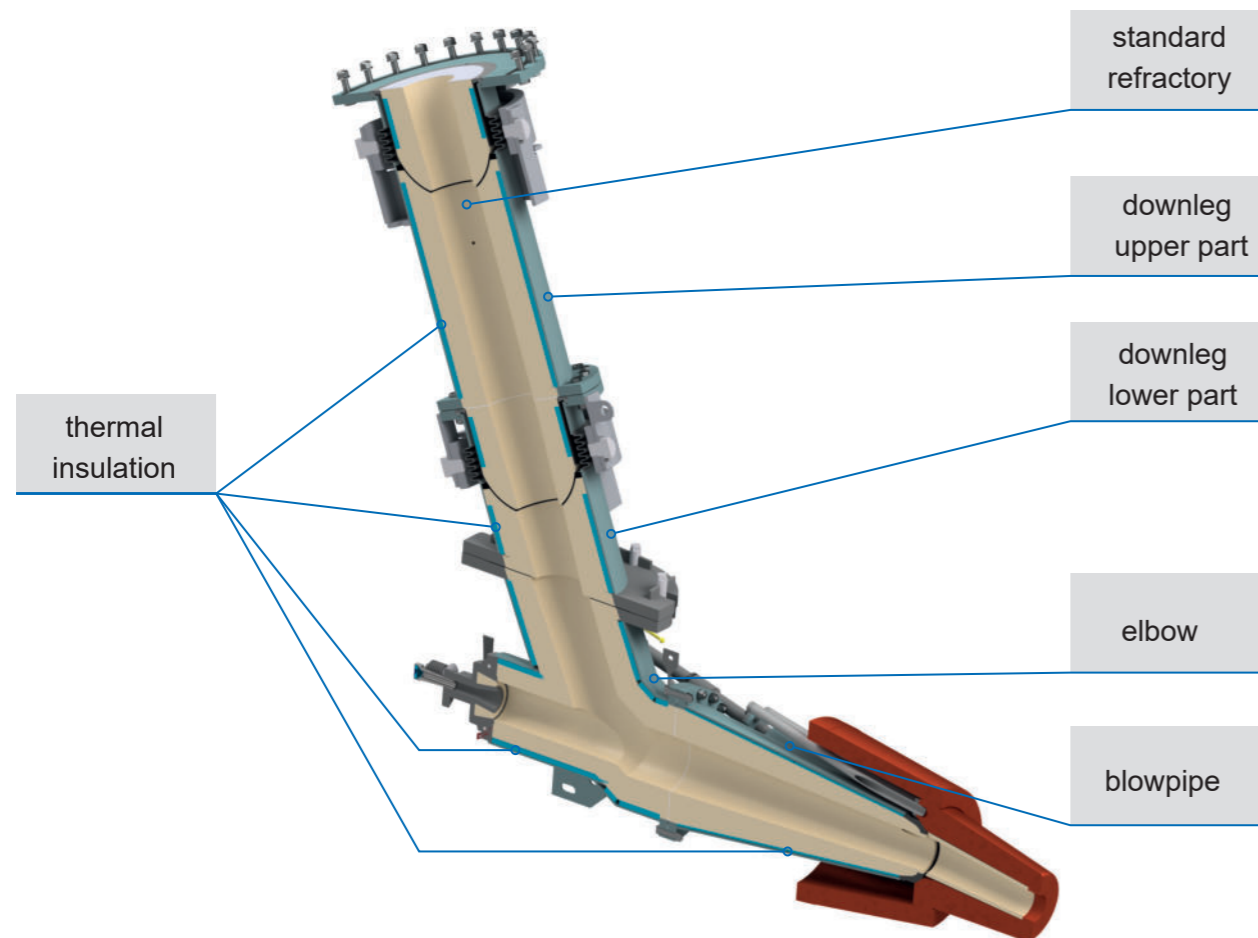
TUYERE STOCKS
ENERGY SAVING PATENTED DESIGN

DESIGN FEATURES OF TUYERE STOCKS

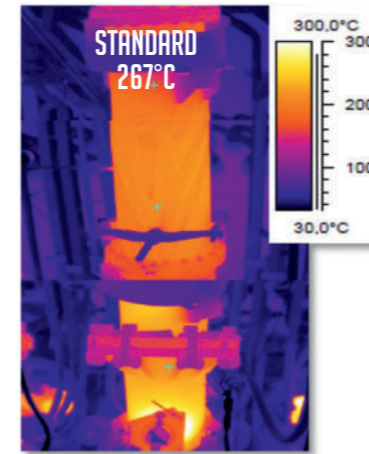
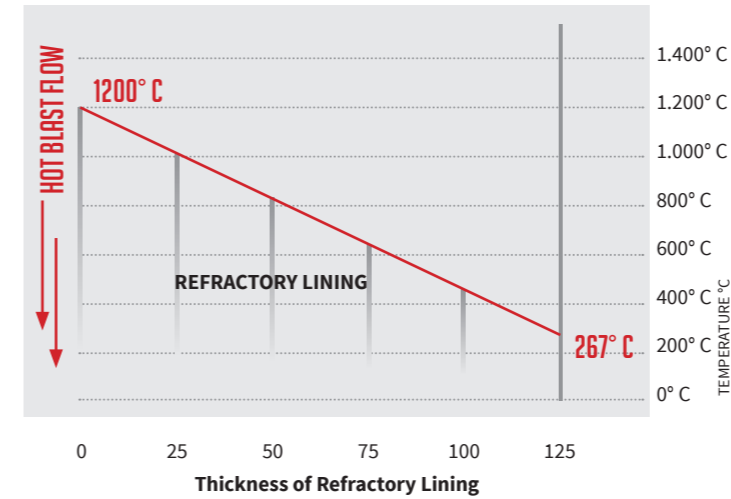
- Increased process heat retention with improved thermal insulation system (thermo blocker)
- Pressure rating up to 6.0 bar
- Service temperatures up to 1550 °C
- Nominal sizes up to 600 mm

DESIGN ADVANTAGES

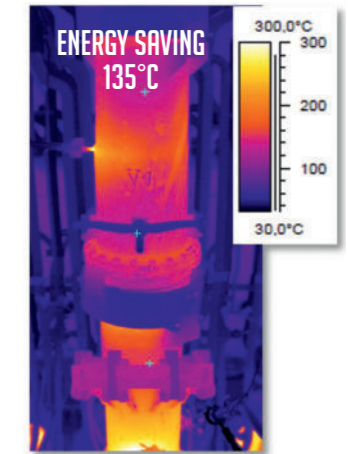
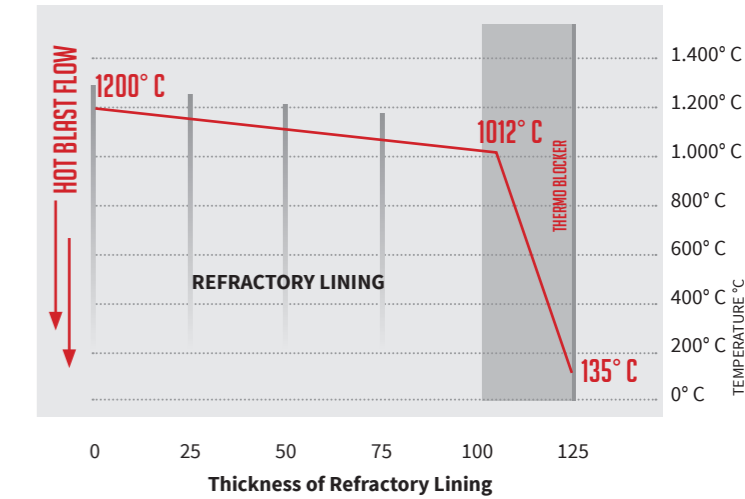
- Improved insulation and reduced thermal stresses improve both reliability & extend the total life cycle
- Reduced operating costs due to decreased heat losses
- Lower surface temperature increases operating & maintenance personnel safety



STANDARD DESIGN



ENERGY SAVING DESIGN



4.000 t COKE

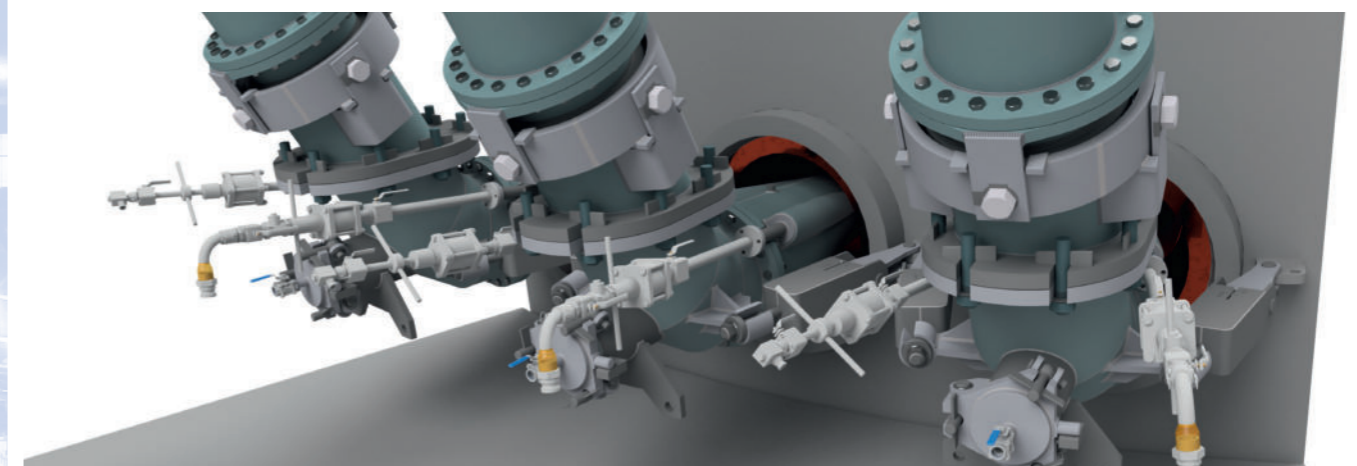
CO₂ 12.000 t

YEARLY SAVINGS
UP TO

1.000.000 € *

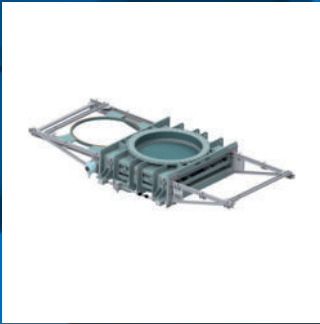
Individual cost saving calculation can be done upon request.

* Savings depending on size of BF, coke price and CO₂ emission cost.



PRODUCT RANGE

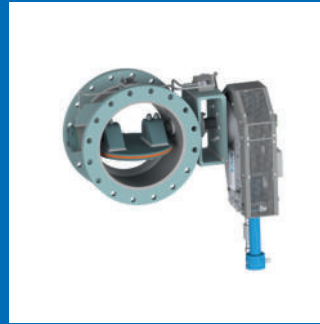
GOGGLE VALVES



GUIDE LEVER VALVES



DOUBLE ECCENTRIC VALVES



EQUALIZING & RELIEF VALVES



DUST DISCHARGE VALVES



HOT BLAST VALVES (ENERGY SAVING)



BLEEDER VALVES



WEDGE GATE VALVES

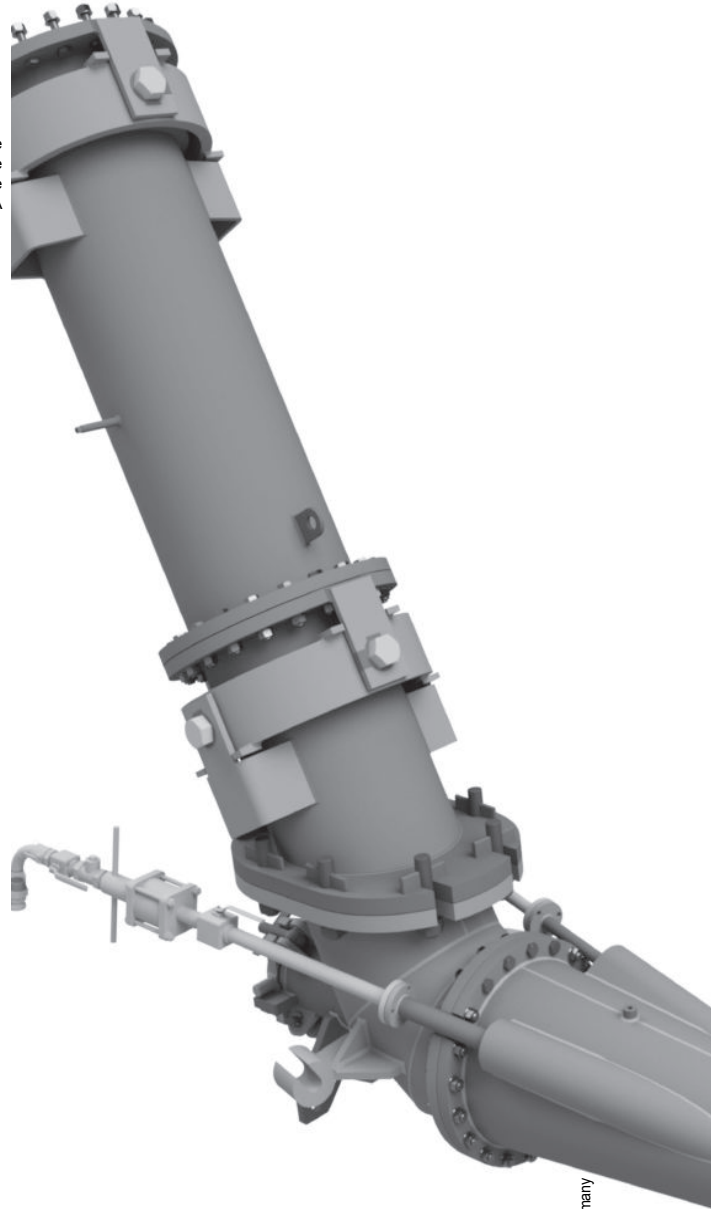
ADDITIONAL PRODUCTS

SNORT VALVES | BACK DRAFT VALVES | BUTTERFLY & LOUVER VALVES
NON RETURN VALVES | LINE BLINDS

ADDITIONAL SERVICES

REPAIR SERVICE | REFURBISHMENT & MODIFICATIONS,
SPARE PARTS FOR EACH KIND AND BRAND OF VALVES

The information and specifications contained in this literature are considered accurate. However, they are supplied for informative purposes and should not be considered certified. The products of BOMAFA Group are continually being improved and the specifications, dimensions and information contained in this catalogue are subject to change without notice. For additional information or confirmation, please consult your BOMAFA Group representative.



Quality Management System



ISO 9001-2015

Head Office:
BOMAFA Oil & Gas GmbH
Hohensteinstr. 52
44866 Bochum / Germany

Tel: +49 (0) 2327 992 - 0
Fax: +49 (0) 2327 314 - 43
Email: sales@bomafa.eu
Website: www.bomafa.eu

