



GUIDE LEVER VALVES

DESIGN FEATURES OF Guide LEVER VALVES

- Fabricated construction
- Valve actuation in accordance with customer's requirements (man. / electr. / hydr. / pneum.)
- Also available as push-lever
- Valves with internal or external shaft
- Internal and external (high temperature) shaft bearings.
- Pressure rating up to 6.0 bar
- Service temperatures up to 500 °C
- Nominal sizes up to DN 4000
- Other sizes or operating conditions on request

DESIGN ADVANTAGES

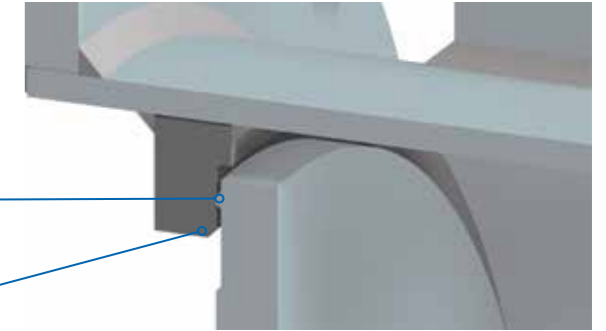
- Almost no wear at the seats due to parallel and friction free opening and closing at the valve disc
- Valves can be used in clean and dust loaded gas atmosphere
- Execution with refractory lining possible

metal-to-metal

up to 500 °C

Morton
Edge

hard-
facing

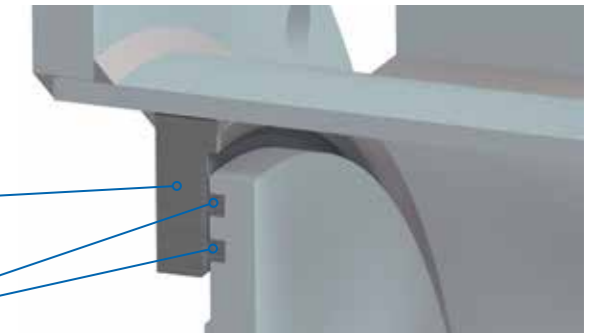


DOUBLE SEALING

up to 300 °C

stainless
steel

sealing
profile



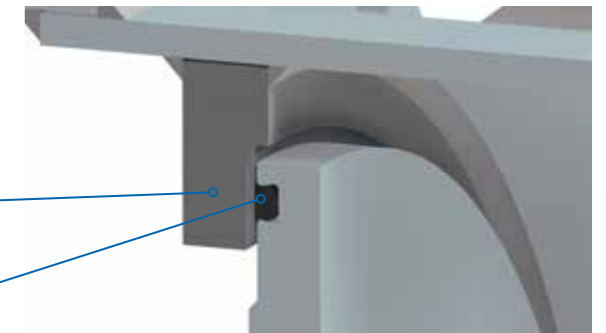
Profile

(silicone, viton, GRAPHITE etc.)

up to 300 °C*

stainless
steel

sealing
profile



*depending on sealing material



external shaft version



internal shaft version



PRODUCT RANGE

**GOGGLE
VALVES**



**BLEEDER
VALVES**



**DOUBLE
ECCENTRIC
VALVES**



**EQUALIZING &
RELIEF VALVES**



**DUST
DISCHARGE
VALVES**



**HOT BLAST
VALVES (ENERGY
SAVING)**



**TUYERE STOCKS
(ENERGY
SAVING)**



**WEDGE GATE
VALVES**

ADDITIONAL PRODUCTS

SNORT VALVES | BACK DRAFT VALVES | BUTTERFLY &
LOUVER VALVES NON RETURN VALVES | LINE BLINDS

ADDITIONAL SERVICES

REPAIR SERVICE | REFURBISHMENT & MODIFICATIONS,
SPARE PARTS FOR EACH KIND AND BRAND OF VALVES

The information and specifications contained in this literature are considered accurate. However, they are supplied for informative purposes and should not be considered certified. The products of BOMAFA Group are continually being improved and the specifications, dimensions and information contained in this catalogue are subject to change without notice. For additional information or confirmation, please consult your BOMAFA Group representative.

Quality Management System



ISO 9001-2015

Head Office:

BOMAFA Oil & Gas GmbH

Hohensteinstr. 52
44866 Bochum / Germany

Tel: +49 (0) 2327 992 - 0
Fax: +49 (0) 2327 314 - 43
Email: sales@bomafa.eu
Website: www.bomafa.eu

