

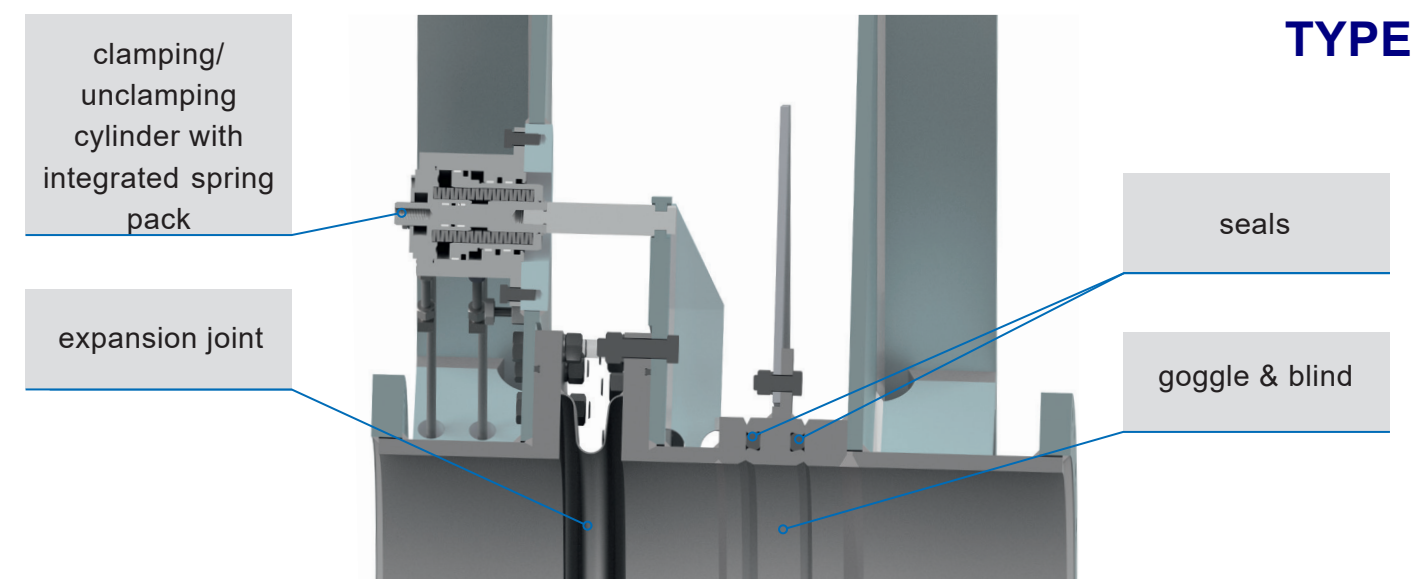
GOGGLE VALVES

DESIGN FEATURES OF goggle VALVES

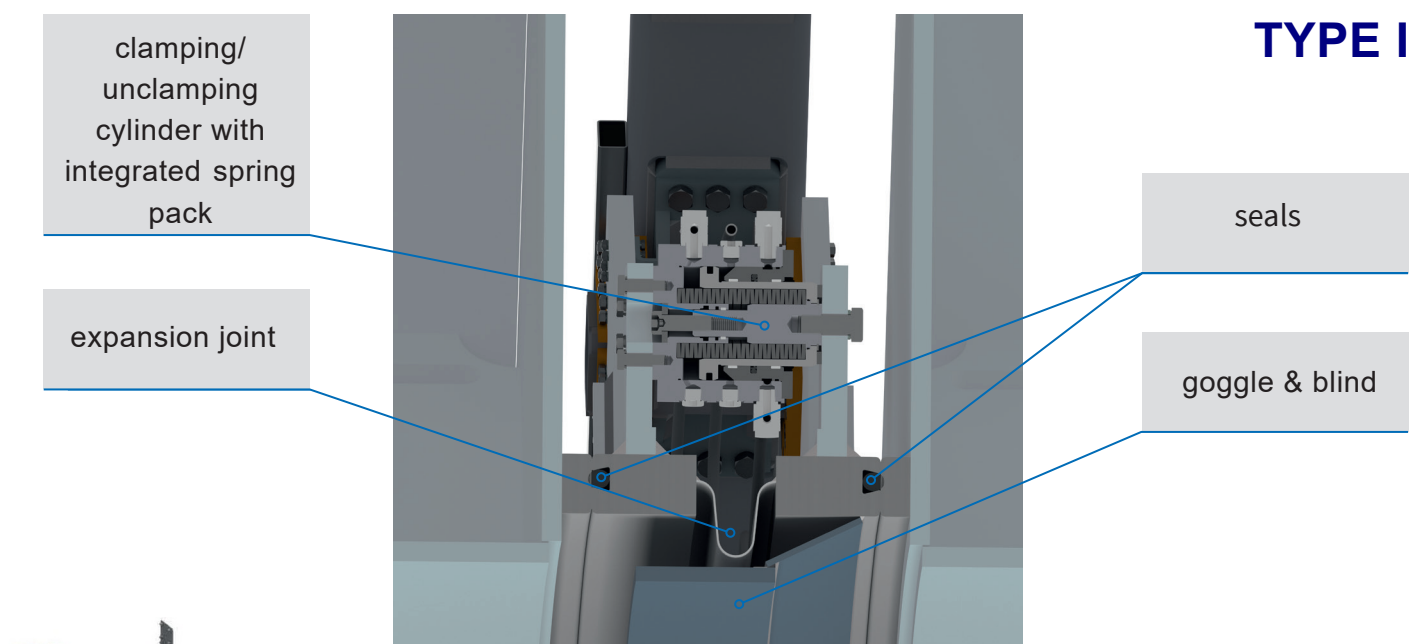
- Fabricated construction
- Valve actuation in accordance to customer's requirements (man. / electr. / hydr. / pneum.)
- The actuating system for clamping and unclamping is available in either a hydraulic or mechanical version
- Available as open or enclosed design (with hoods)
- Pressure rating up to 6.0 bar
- Service temperatures up to 350 °C
- On demand, electric control cabinets for automatic operation as well as hydraulic units are available
- Nominal sizes up to DN 4000
- Stainless steel clamping cylinder
- Other sizes or operating conditions on request

DESIGN ADVANTAGES

- Absolutely gas-tight, so called "man safe" isolation device, used for toxic gaseous media (even with high dust content)
- Even in the event of a leakage the gas can either escape to the atmosphere (open design) or is collected in the hoods of the enclosure and can be safely extracted (enclosed design)
- After traversing, the valve plate is clamped between the body sealing surfaces and is sealed by elastic seals inserted into grooves on the sealing faces of goggle and blind
- In the event of power loss the valve remains tight, as the required sealing force is created by spring-loaded clamping devices



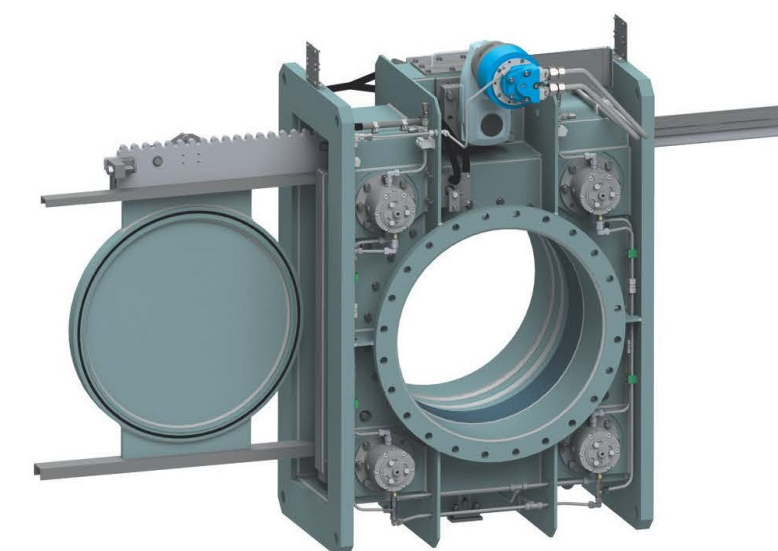
TYPE I



TYPE II

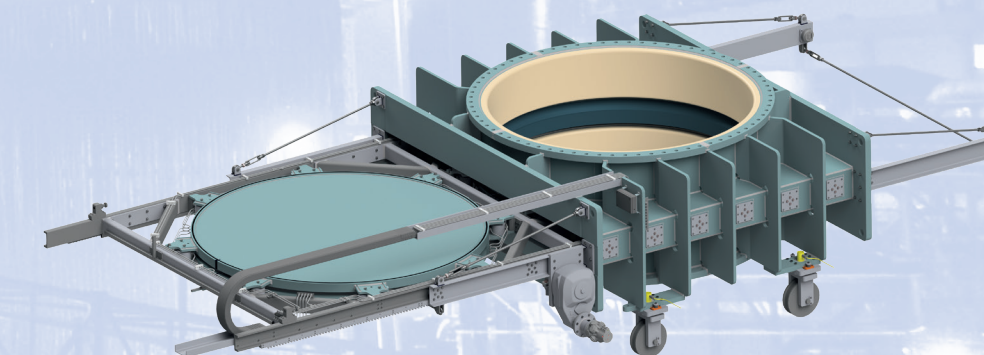
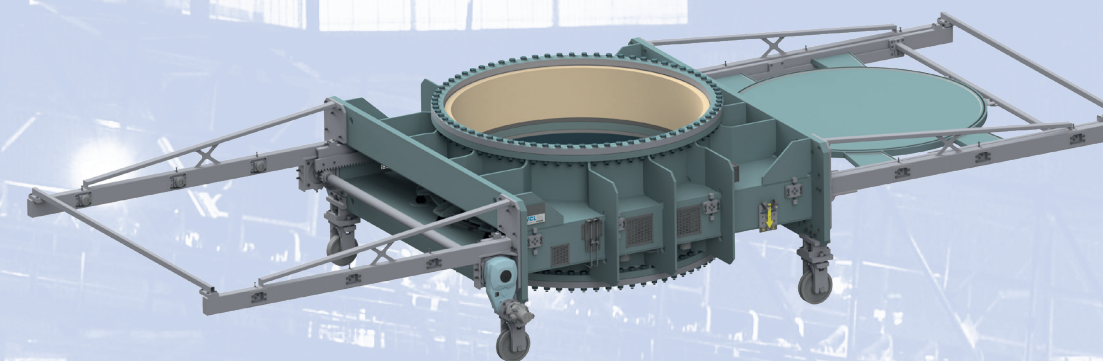
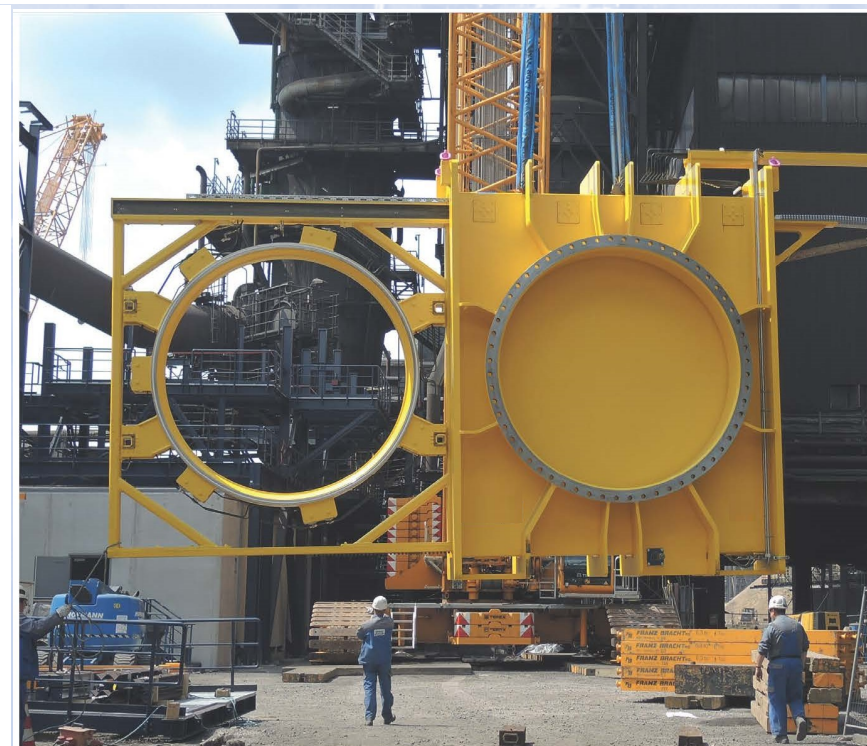
FEATURES

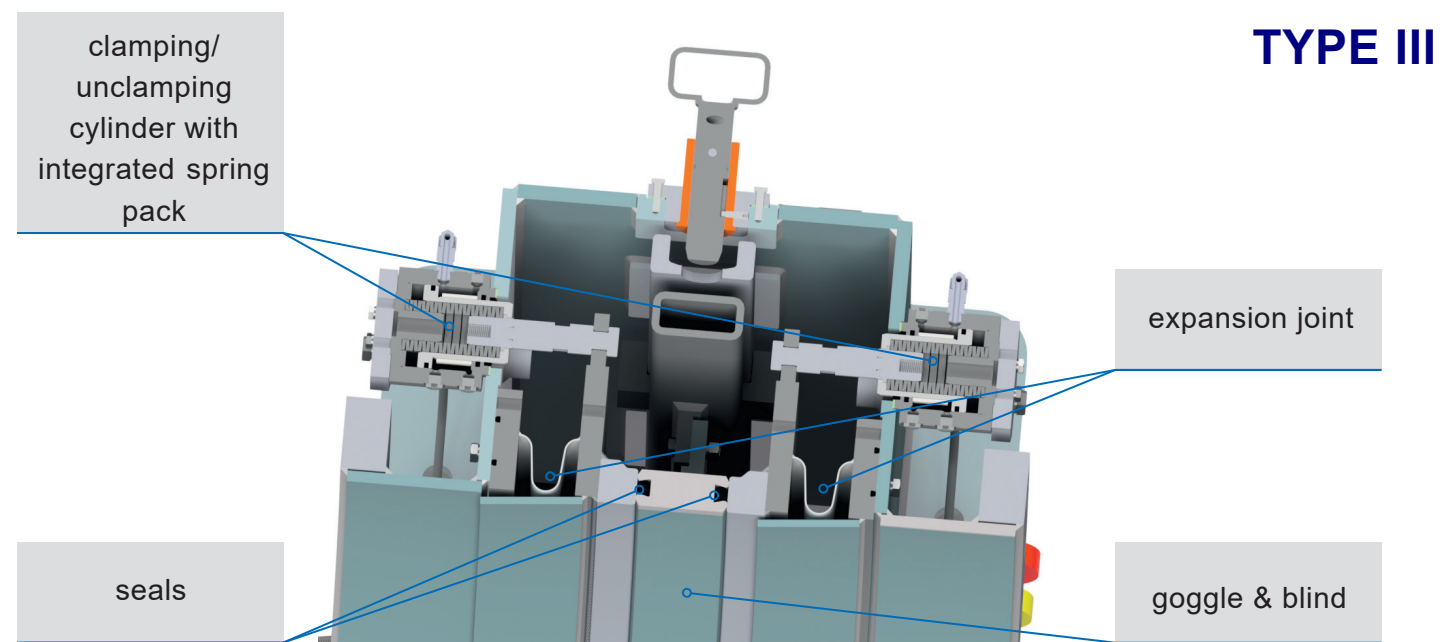
- Clamping/unclamping devices are accessible/changeable from the outside during operation
- One single, firmly piped hydraulic system for goggle & blind
- Hydraulics are not exposed to full thermal load
- The expansion joint can be accessed/exchanged in dismantled condition
- Goggle & blind are centered by a mechanical guiding system



FEATURES

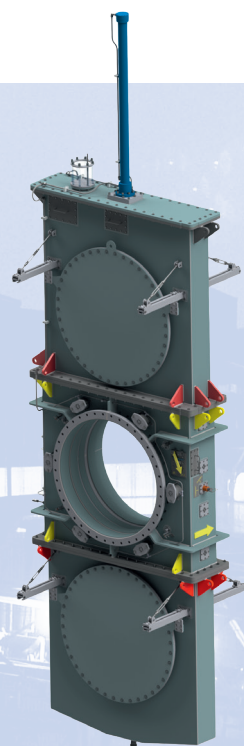
- Clamping/unclamping cylinders are accessible/changeable from the outside in the unclamped section during operation
- The expansion joints are accessible/changeable in the unclamped section during operation
- Goggle & blind are centered (no complex mechanical guiding system required)
- Independent oil supply for goggle & blind (double quantity of cylinders!)





FEATURES

- Clamping/unclamping devices are accessible/changeable from the outside during operation
- One single, firmly piped hydraulic system for goggle & blind
- Hydraulics are not exposed to full thermal load
- Goggle & blind are centered by means of two expansion joints
- Two expansion joints and double quantity of clamping/unclamping cylinders are required. The expansion joints can only be accessed/exchanged in dismantled condition



IRON & STEEL PRODUCT RANGE

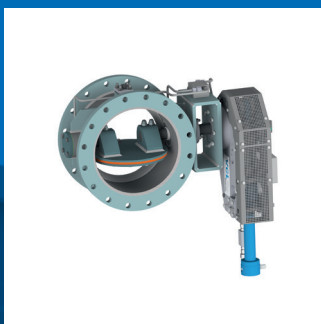
BLEEDER VALVES



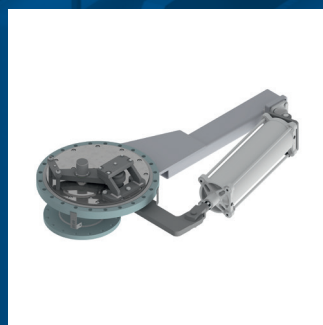
GUIDE LEVER VALVES



DOUBLE ECCENTRIC VALVES



EQUALIZING & RELIEF VALVES



DUST DISCHARGE VALVES



HOT BLAST VALVES (ENERGY SAVING)



TUYERE STOCKS (ENERGY SAVING)



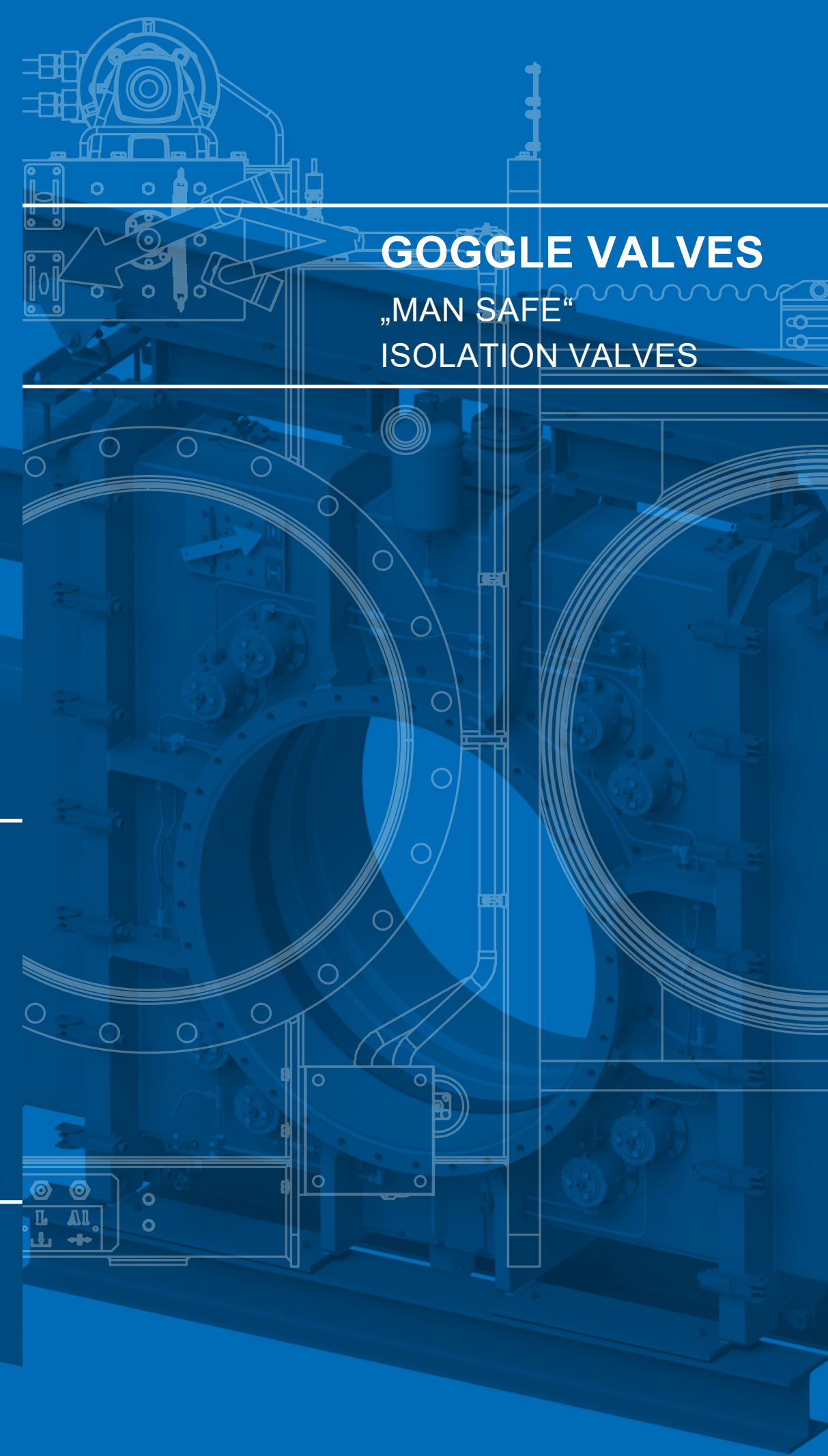
WEDGE GATE VALVES

ADDITIONAL PRODUCTS

SNORT VALVES | BACK DRAFT VALVES | BUTTERFLY & LOUVER VALVES NON RETURN VALVES | LINE BLINDS

ADDITIONAL SERVICES

REPAIR SERVICE | REFURBISHMENT & MODIFICATIONS, SPARE PARTS FOR EACH KIND AND BRAND OF VALVES



The information and specifications contained in this literature are considered accurate. However, they are supplied for informative purposes and should not be considered certified. The products of BOMAFA Group are continually being improved and the specifications, dimensions and information contained in this catalogue are subject to change without notice. For additional information or confirmation, please consult your BOMAFA Group representative.

Quality Management System



ISO 9001-2015

Head Office:

BOMAFA Oil & Gas GmbH

Hohensteinstr. 52
44866 Bochum / Germany

Tel: +49 (0) 2327 992 - 0
Fax: +49 (0) 2327 314 - 43
Email: sales@bomafa.eu
Website: www.bomafa.eu

