

Hydraulic cylinder

Synchronous or differential cylinders, single or double acting, with or without spring return, optionally with position feedback and limit switches.

Hydraulic cylinder

Characterized by their long service life.

This is guaranteed by using of high-quality materials for guide and sealing elements.

Cylinder design:

- Synchronous cylinder
- Differential cylinder
- single or double acting
- with or without spring return
- Optionally with position feedback and limit switches

Our position measuring systems are non-contact according to the state of the art. Hydraulic cylinders in special designs are also part of our delivery program.



Hydraulic cylinder

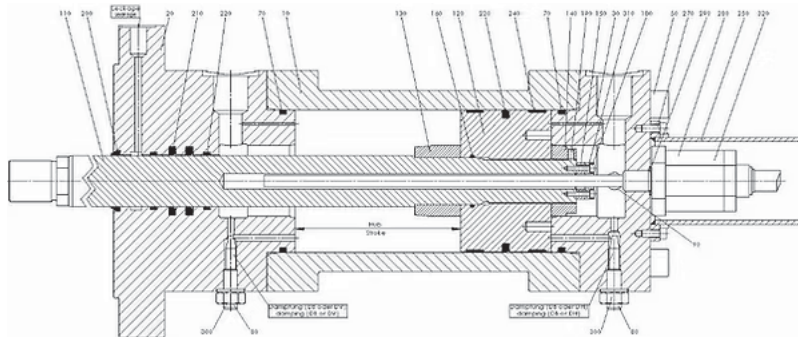
Type CD 250 C DBUW (nominal pressure 250 bar)

Application:

Hydraulic actuation of a control valve

Execution:

- double-acting with end position damping in both directions
- with a position indicator (magnetostrictive position measuring system)
- with 2 pieces non-contact limit switches (initiators)
- with a terminal box (position measuring system and limit switches are wired up to there.)



Hydraulic cylinder

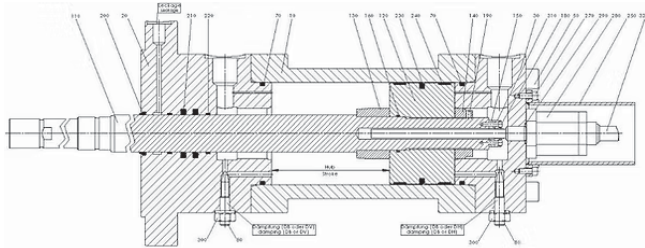
Type CER 250 C DVUW (nominal pressure 250 bar)

Application:

Hydraulic actuation of a control valve with safety quick closing function

Execution:

- single-acting with end position damping in CLOSE position (piston rod extended)
- with a position indicator (magnetostrictive position measuring system)
- with a terminal box (position measuring system is wired up to there.)
- with a spring cylinder with built-in and preloaded disc spring package (for a quick-closing function)



Hydraulic cylinder

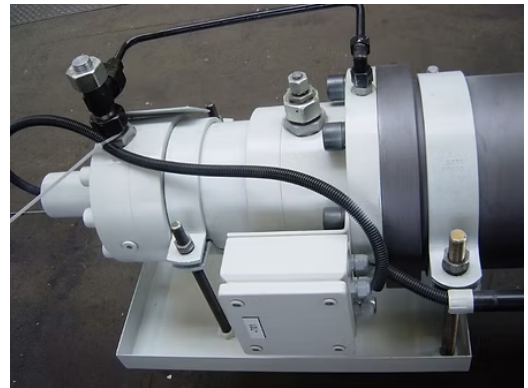
Type CER 250 C DVUW (nominal pressure 250 bar)

Application:

Hydraulic actuation of a steam reducing valve with safety quick closing function

Execution:

- single-acting with end position damping in CLOSE position (piston rod extended)
- with a position indicator (magnetostrictive position measuring system)
- with a terminal box (position measuring system is wired up to there.)
- with a spring cylinder with built-in and preloaded disc spring package (for a quick-closing function)
- with an oil drip tray (for horizontal installation)



Hydraulic cylinder

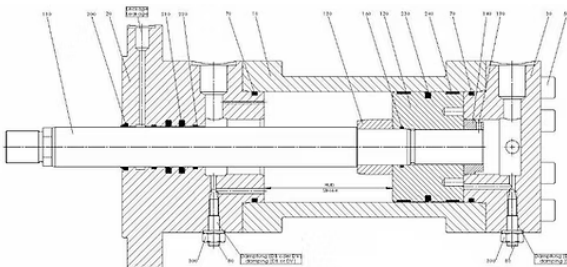
Type CER 250 C DV (nominal pressure 250 bar)

Application:

Hydraulic actuation of a shut-off valve

Execution:

double-acting with end position damping in both directions



Hydraulic cylinder

Types CER 250 C DV and CD 250 C DBUW (both: nominal pressure 250 bar)

Application:

Hydraulic actuation of a combined shut-off and control valve

Execution:

- single-acting with end position damping in CLOSE position (piston rod extended) for the shut-off valve (on top in the picture), equipped with 4 mechanical limit switches, with a spring cylinder (a pre-loaded disc spring package is installed for the quick-closing function) and with an oil drip tray (for vertical installation)
- double-acting with end position damping in both directions for the control valve (on the right in the picture), equipped with a position indicator (magnetostrictive position measuring system)
- Each of the both hydraulic cylinders is equipped with a control block with all the components which are necessary to control the hydraulic cylinders.
- Additional, each of the both hydraulic cylinders is equipped with a terminal box to which all electrical components are wired.

