



# DOUBLE DISC VALVE (DGV)

VALVES FOR ETHYLENE PRODUCTION

## SPECIAL VALVES

---

Taking advantage of its longstanding know-how in designing and supplying special valves for severe operating conditions for metallurgical plants like blast furnaces, BOMAFA Oil & Gas today develops, manufactures and distributes special valve solutions for refineries and petrochemical plants.

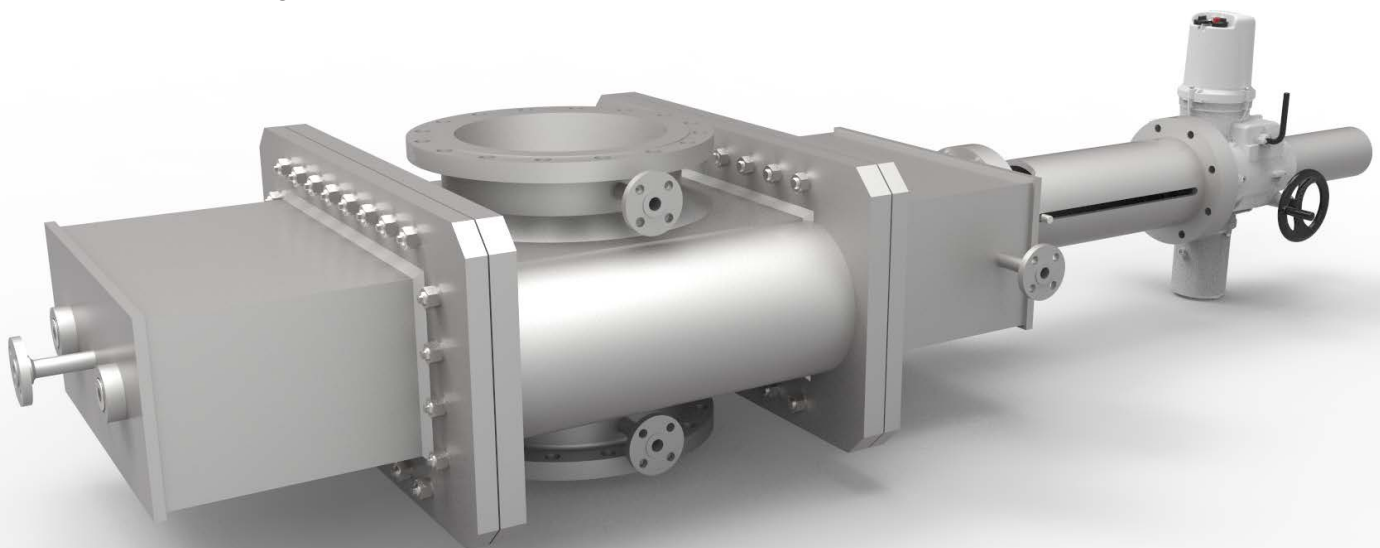
### TRANSFER LINE AND DECOKE LINE ISOLATION VALVES, DOUBLE DISC DESIGN

In the field of **Ethylene Production**, BOMAFA offers Transfer Line and Decoke Line Isolation Valves tailored to your needs.

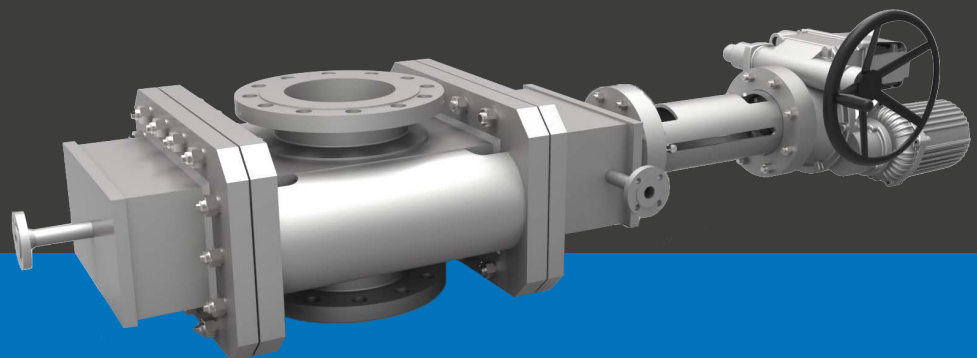
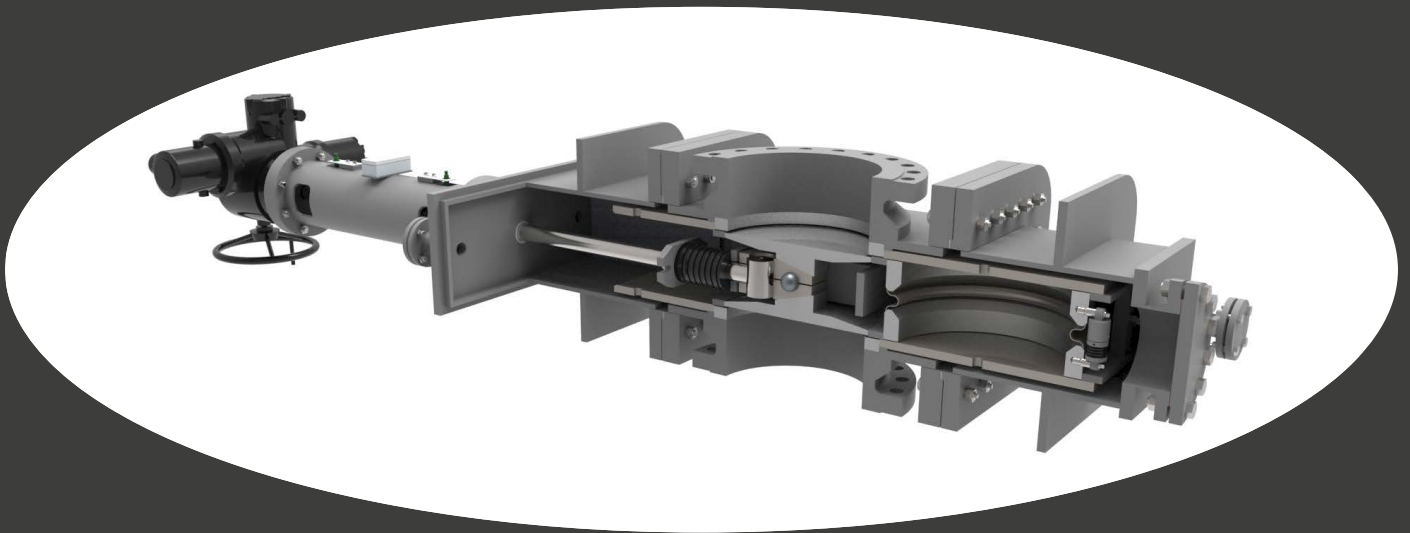
The **Double Disc Trough Conduit type** Gate Valve has a higher tightness and subsequently a higher safety level than other designs. It provides a true double isolation and purge capability within one valve body. To achieve the same functionality with other valves, two valves installed in the same line and an additionally purging of the space between the two valves are necessary.

#### Key features

- ▶ Double Disc Technology provides positive, tight shut-off by means of active sealing force when shut
  - ▶ True Double Block and Purge performance within one valve body
  - ▶ Special valve-body design to avoid unequal seat deformation provides :
    - higher tightness (20% less steam leakage)
    - less deformation of the connecting flanges
    - less stress to the valve-body welding- seams
  - ▶ Open throughway without flow restrictions in open position
  - ▶ Electrical, hydraulic or pneumatic options available for valve actuation
  - ▶ Valve design according to customer demands and licensors/customers specifications
- > better fatigue performance



Transfer Line Isolation Valve (TLV)



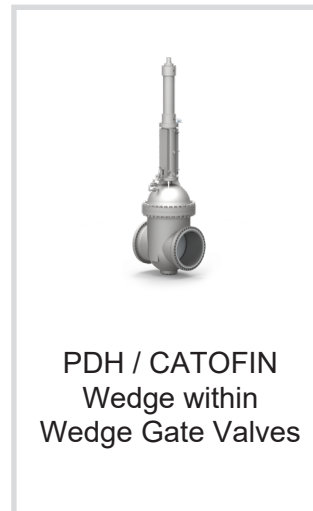
## Typical Figures

- ▶ size from 10" (250 mm) up to 58" (1450 mm)
- ▶ operating temperature up to 525°C
- ▶ operating pressure up to 16 bar(g)
- ▶ actuation: electric, pneumatic or hydraulic

Other sizes, design features and / or operating features are available on request.

## BOMAFA PRODUCT RANGE - OIL & GAS

---



## ADDITIONAL PRODUCTS - IRON & STEEL

---

Goggle Valves, Lever Valves, Double Eccentric Valves, Butterfly and Louver Valves, Dust Outlet Valves, Hot Blast Valves, Tuyere Stocks, Wedge Gate Valves

Push Lever , Snort Valves, Bleeder Valves, Equalizing & Relief Valves, Back Draft Valves, Non Return Valves, Line Blinds.

## ADDITIONAL SERVICES

---

Repair Services, Refurbishment and Modification,  
Spare Parts for each kind and Brand of Valves

The information and specifications contained in this literature are considered accurate. However, they are supplied for informative purposes and should not be considered certified. The products of BOMAFA Group are continually being improved and the specifications, dimensions and information contained in this catalogue are subject to change without notice. For additional information or confirmation, please consult your BOMAFA Group representative.

## Quality Management System



**ISO 9001-2015**

**Head Office:**

**BOMAFA Oil & Gas GmbH**

Hohensteinstr. 52  
44866 Bochum / Germany

Tel: +49 (0) 2327 992 - 0  
Fax: +49 (0) 2327 314 - 43  
Email: [sales@bomafa.eu](mailto:sales@bomafa.eu)  
Website: [www.bomafa.eu](http://www.bomafa.eu)

